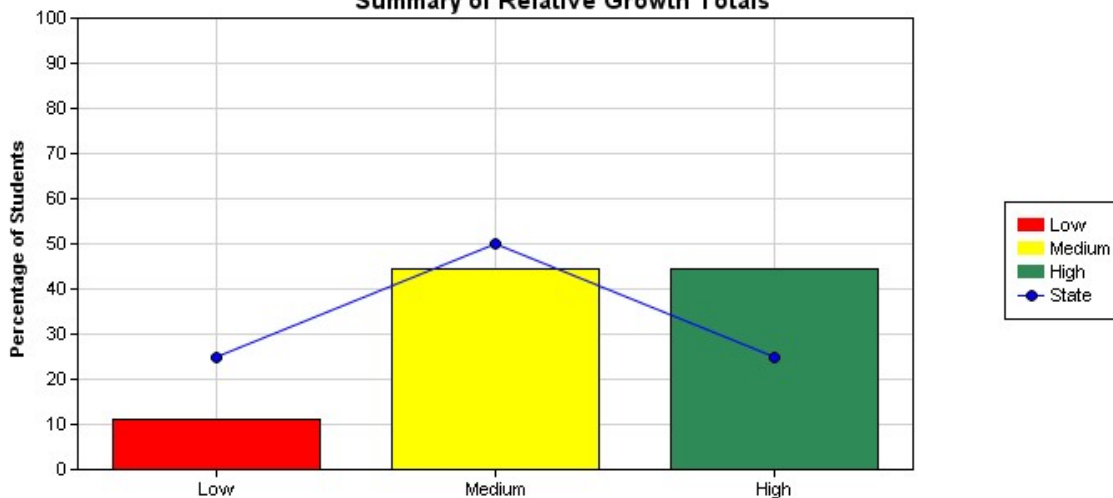


HARRISFIELD PRIMARY SCHOOL
Relative Growth Report - Graphical Summary for NUMERACY
National Assessment Program - Literacy and Numeracy Tests 2016
Year 5 - Class: All

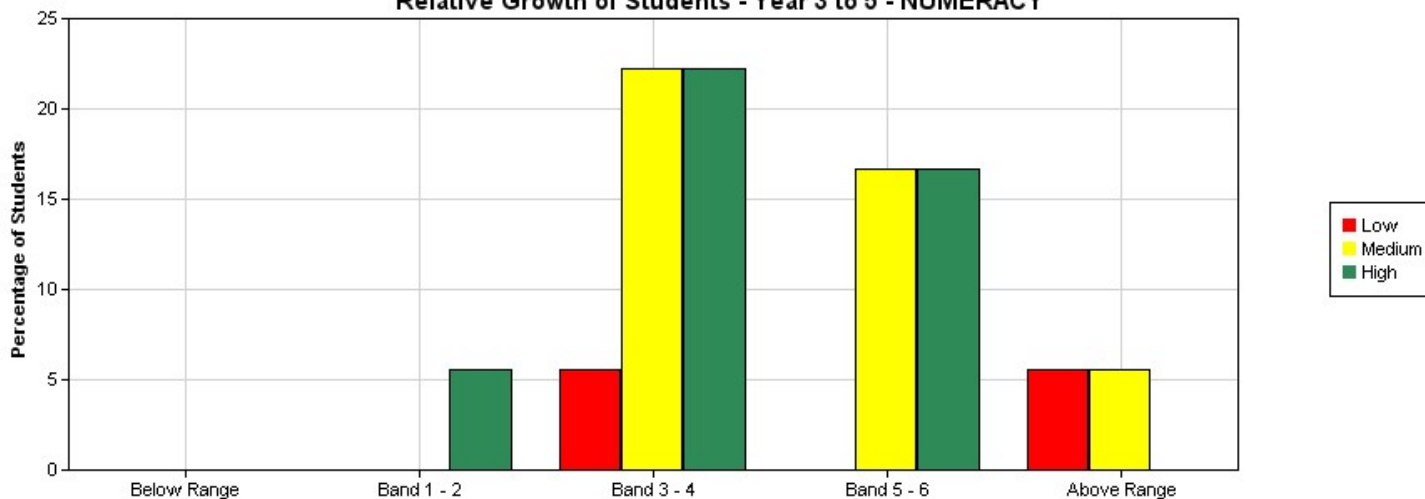
[View - Information about this report](#)

Summary of Relative Growth Totals



	Low	Medium	High	Totals
Percentage of students - State	25	50	25	100
Percentage of students - School	11.11	44.44	44.44	100
No of Students - School	2	8	8	18

Relative Growth of Students - Year 3 to 5 - NUMERACY



	Below Range			Band 1 - 2			Band 3 - 4			Band 5 - 6			Above Range		
	Low	Medium	High	Low	Medium	High	Low	Medium	High	Low	Medium	High	Low	Medium	High
% of Students	0	0	0	0	0	5.56	5.56	22.22	22.22	0	16.67	16.67	5.56	5.56	0
No of Students	0	0	0	0	0	1	1	4	4	0	3	3	1	1	0

Online tutorial assistance for reports can be accessed at <http://usingassessmentdata.vcaa.vic.edu.au/naplan/index.aspx>