

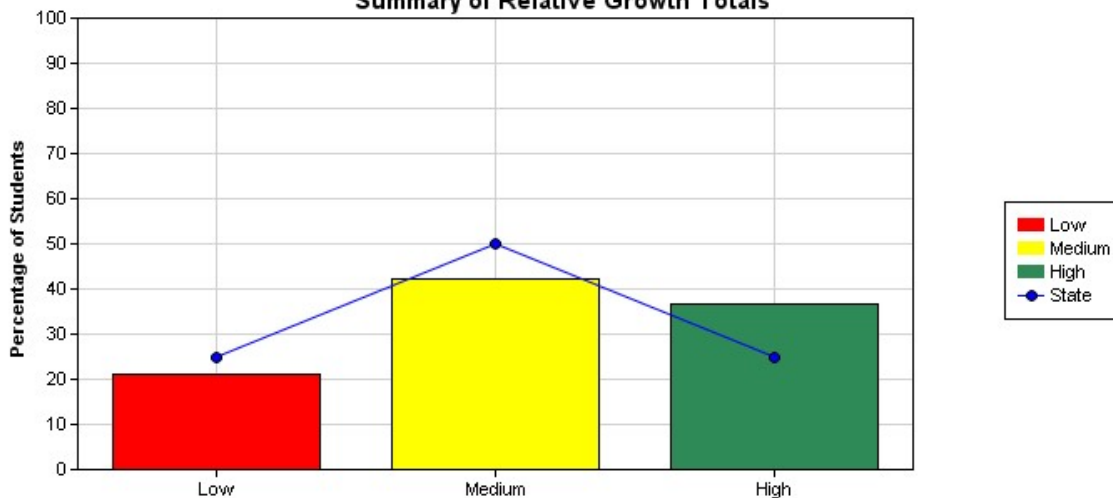
HARRISFIELD PRIMARY SCHOOL

Relative Growth Report - Graphical Summary for READING

National Assessment Program - Literacy and Numeracy Tests 2016
Year 5 - Class: All

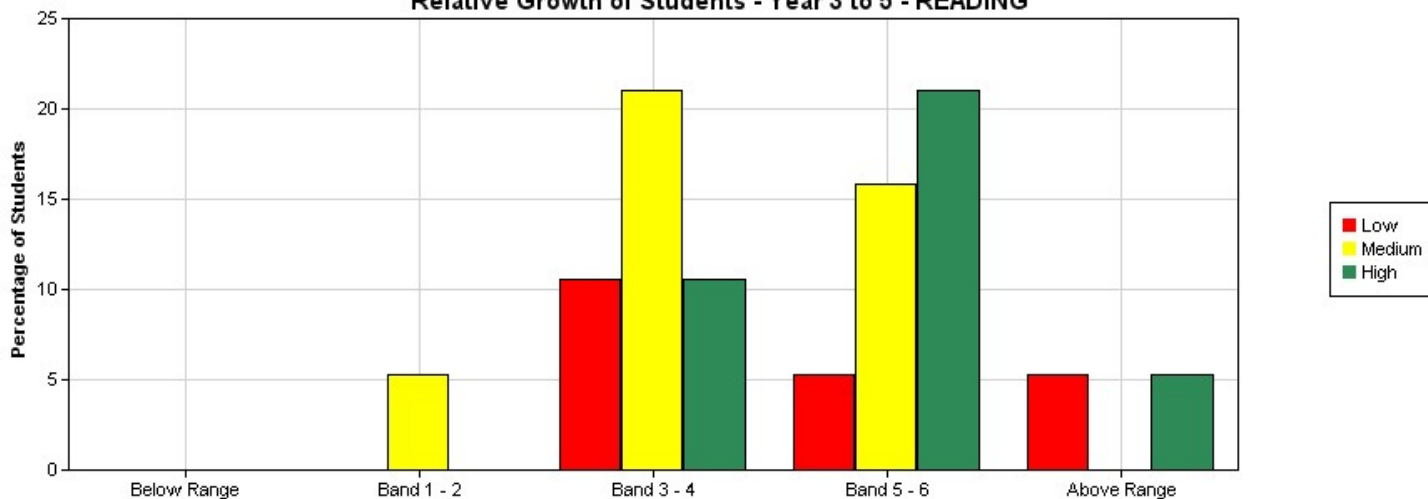
[View - Information about this report](#)

Summary of Relative Growth Totals



	Low	Medium	High	Totals
Percentage of students - State	25	50	25	100
Percentage of students - School	21.05	42.11	36.84	100
No of Students - School	4	8	7	19

Relative Growth of Students - Year 3 to 5 - READING



	Below Range			Band 1 - 2			Band 3 - 4			Band 5 - 6			Above Range		
	Low	Medium	High	Low	Medium	High	Low	Medium	High	Low	Medium	High	Low	Medium	High
% of Students	0	0	0	0	5.26	0	10.53	21.05	10.53	5.26	15.79	21.05	5.26	0	5.26
No of Students	0	0	0	0	1	0	2	4	2	1	3	4	1	0	1

Online tutorial assistance for reports can be accessed at <http://usingassessmentdata.vcaa.vic.edu.au/naplan/index.aspx>