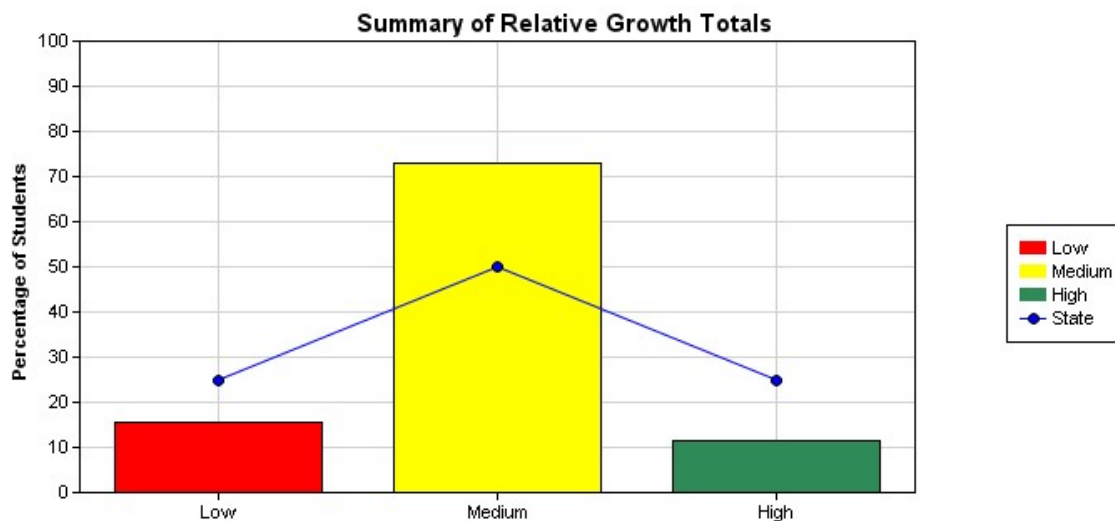
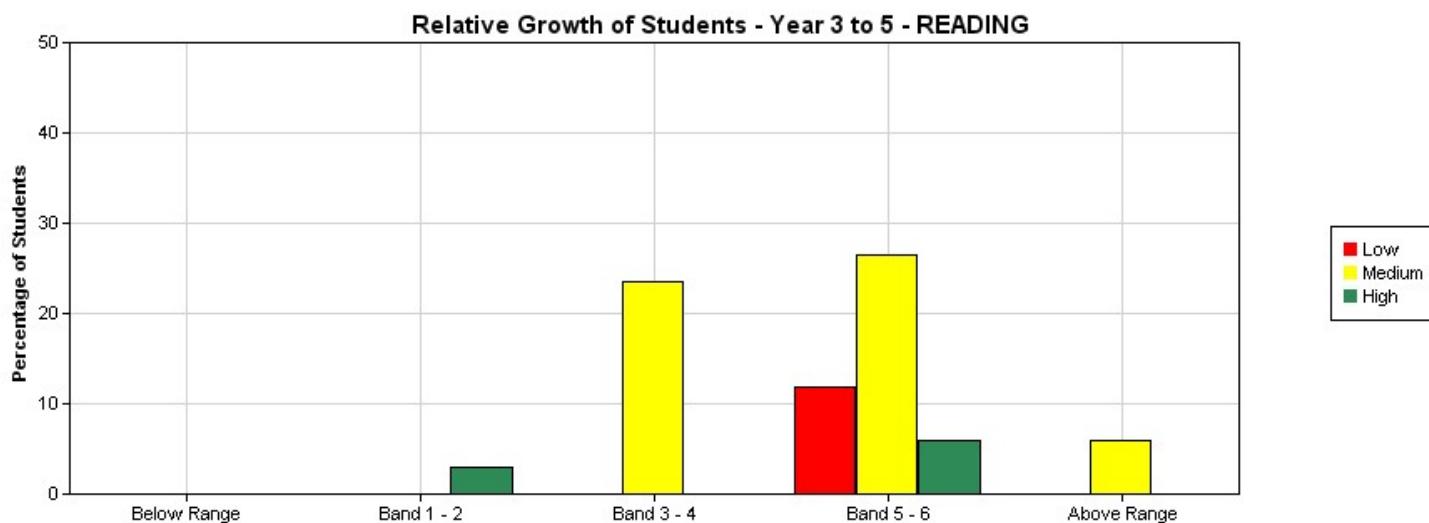


HARRISFIELD PRIMARY SCHOOL
Relative Growth Report - Graphical Summary for READING
National Assessment Program - Literacy and Numeracy Tests 2014
Year 5 - Class: All

[View - Information about this report](#)



	Low	Medium	High	Totals
Percentage of students - State	25	50	25	100
Percentage of students - School	15.38	73.08	11.54	100
No of Students - School	4	19	3	26



	Below Range			Band 1 - 2			Band 3 - 4			Band 5 - 6			Above Range		
	Low	Medium	High	Low	Medium	High	Low	Medium	High	Low	Medium	High	Low	Medium	High
% of Students	0	0	0	0	0	2.94	0	23.53	0	11.76	26.47	5.88	0	5.88	0
No of Students	0	0	0	0	0	1	0	8	0	4	9	2	0	2	0

Online tutorial assistance for reports can be accessed at <http://usingassessmentdata.vcaa.vic.edu.au/naplan/index.aspx>