

Early Childhood Expo

Hosted by Fremont County School District #25
& Aspen Early Learning Center

Thursday, February 6, 2020

- 7:30-8:30 Registration, Meet & Greet, and Coffee & a Bite
A lite breakfast bite and coffee/tea will be available for visitors
- 8:30-8:45 Introduction and Welcome to Aspen Early Learning Center: Sheryl Esposito/
Courtney Hill
- 8:45-9:15 Key Note: The Vision: Creating a Birth to Kinder Resource and Flagship School
for our Community
- 9:30-10:45 Classroom Visits—Tour Guides will lead groups to learn about our programs
and see them in action.
Groups will visit our Four Main on Campus Programs: Preschool, K Boost,
Kindergarten, and STREAM.
- 11:00-12:00 Lunch—Provided at Aspen Early Learning Center: Welcome by FCSD #25 Board
Members.
- 11:30-11:45 Early Childhood Liaison Announcement
- 11:45-12:30 Boost Panel Discussion with Q&A
Hear from our K Boost teachers who started our programs, Kindergarten
teachers who have been impacted by the change, and our Administration and
Support Staff on the process.
- 12:30-1:00 Learning With Littles, Preschool Outreach, and Aspen ConnectIONS Video
Presentation
See how the Early Learning Center has brought in families and provided
services to local preschools helping make the connections between
community services.
- 1:00-1:30 The Bottom line: How we financed Boost—Lu Beecham and Joanne Flanagan
- 1:30-2:30 Closing Statements and Q&A—Terry Snyder, Joanne Flanagan,



Aspen Early Learning Center Boost Longitudinal Data



Where it all begins....

FOCUS

We believe that Boost is a gift of time. Students may need time to develop their school readiness skills even though they are Kindergarten age. Learning concepts through play, literacy stations, hands-on manipulation, small group interaction, and active engagement opportunities allows students to be successful in the rigorous learning that will come in their next 13 years.



Leaders

The biggest growth we see with our Boost students is in leadership. After being given the gift of time, our Boost kids enter Kindergarten with a sense of pride, knowledge of how to navigate the school, to help others, and an understanding of how to participate in daily activities. These students hold their heads up high and lead their classmates.



Assessments

Beginning with MAP and CPAA and then moving to focusing in on the Foundational Skills of the Fast Bridge early assessments has changed our data over the four years of Aspen ELC. We have four groups of students. The Boost 16-17, Boost 17-18, Boost 18-19, and our current Boost 19-20



Skills we develop in Boost

- Sitting and listening to a story
- Following Directions
- Taking Turns
- Building Stamina
- Sharing with others
- Using their words to express their feelings and opinions
- Being Safe, Responsible, and
- Respectful
- Learning to navigate the school
- Transitions



On the back are some key academic data points we are collecting.

Key Academic Data Points

Can't wait to see where year 5 takes us!

Year	Assessment	First Day of School	End of 1st Qtr	End of 4th Qtr
16-17	District Letter ID	0%	10%	62%
	District Oral Counting	0%	2%	33%
	FastBridge Kinder Rd (17-18)			66%
17-18	FastBridge Kinder MA (17-18)			77%
	FastBridge 1st Rd (18-19)			58%
	FastBridge 1st MA (18-19)			96 %
18-19	District Letter ID	0%	7%	68%
	District Oral Counting	0%	0%	63%
	FastBridge Kinder Rd (18-19)			66%
19-20	FastBridge Kinder MA (18-19)			69%
	District Letter ID	0%	11%	58%
	District Oral Counting	0%	9%	67%
18-19	FastBridge Kinder Rd (19-20) Mid Year			90%
	FastBridge Kinder MA (19-20) Mid Year			39%
	District Letter ID	0%	45%	NA
19-20	District Oral Counting	0%	27%	NA

Aspen Early Learning Center

Serving the community through dedicated, compassionate education of children Birth to Kindergarten and their families.



Birth to 5

**Sheryl Esposito,
Principal
1620 E Sunset Dr.
307-856-2625**



Preschool

Eagle's Nest Children who are 4 by September 15 can apply to attend



Preschool

Eagle's Nest Preschool at Aspen ELC.
This is a free program with transportation.

Monday-Tuesday-Thursday
AM and PM Classes

Apply TODAY!

AEI/C Birth to 5

Investing in children is good for society.



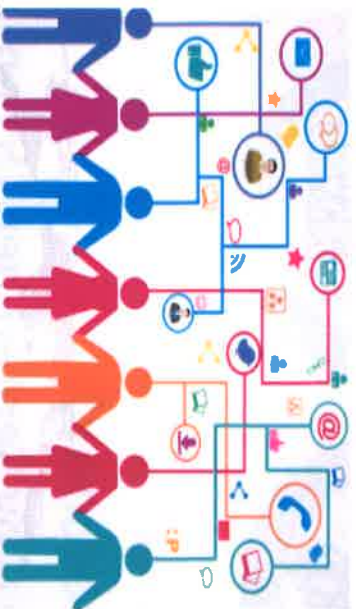
Learning With Littles

LWLS

Wed. and Fri. AM parent child engagement activities.

Sept. 4– May 20

9:00 am



Aspen ConnectIONS

IONS

Information On Needed Services for families done via Facebook LIVE ! Let us connect you to services and information.

Early Childhood Collective



Fremont county

ECC

Monthly Meetings for childcare and preschool providers. STARS Credit, Dinner, Goodies, and More. 3rd Monday of Each Month Sept-May.



Early Childhood Collective
Fremont county

Book Bags

Sign your 4 year olds up to receive a book bag each month with fun activities and a book to keep.

Teacher's role in Play-based learning
The Classroom
teacher's role is simple;



to provide students with a variety of stimulating and developmentally appropriate play opportunities.

In addition, the classroom teacher will assess student progress and create games and activities to provide new learning opportunities.



For information on Kindergarten Boost, visit Aspen Early Learning Center at:

<http://ap.fremont25.org>

—Or call—

307-856-2625



Aspen Early Learning Center
Kindergarten Boost

A parent's guide to the benefits of AELC's Boost program.

"Building Strong Foundations using play based learning and positive community involvement and to develop successful productive citizens."

Imagining, Exploring and Manipulating



Playing is the natural way for children to learn about the world around them. Studies show that children exposed to stimulating, hands on play environments are likely to benefit socially, developmentally and academically, compared to more traditional paper and pencil methods of learning.

Benefits of Play

Social/Emotional:

- Builds confidence, as students feel less pressure to perform formally
- Increases interpersonal skills, as students learn to solve problems and work cooperatively
- Fosters self awareness and relationship building

Academic Benefits

- Increased initiative and interest taken in learning , as students play can cater to their interests
- Builds critical thinking and problem solving skills, through exploratory learning
- Long-term increase in mathematical and language performance in school

Physical Development:

- Increases fine and gross motor skills, as students are exposed to challenging tasks and activities
- Increase both receptive and expressive language, from engaging in symbolic play
- Enhances ability to think abstractly by manipulating real objects using senses
- Develops imagination , nurtures curiosity, and teaches children how to think more creatively

