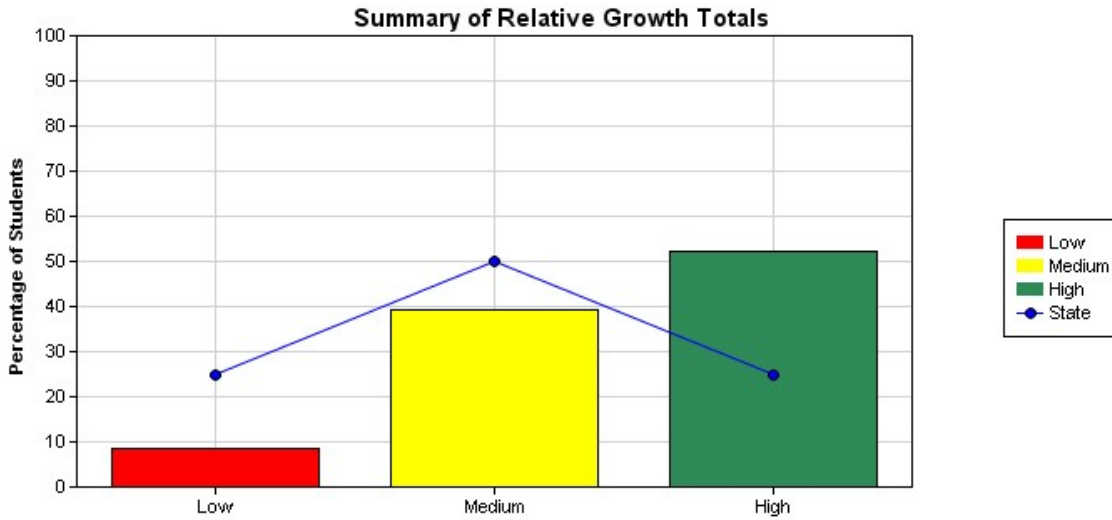


# HARRISFIELD PRIMARY SCHOOL

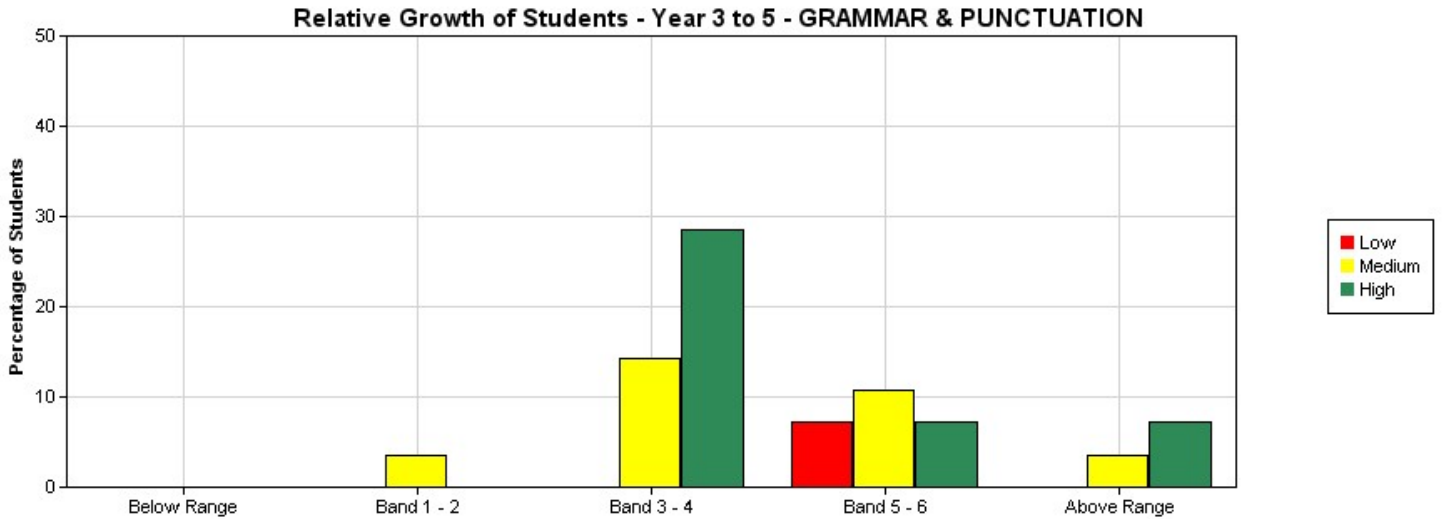
## Relative Growth Report - Graphical Summary for GRAMMAR & PUNCTUATION

National Assessment Program - Literacy and Numeracy Tests 2015  
 Year 5 - Class: All

[View - Information about this report](#)



	Low	Medium	High	Totals
Percentage of students - State	25	50	25	100
Percentage of students - School	8.70	39.13	52.17	100
No of Students - School	2	9	12	23



	Below Range			Band 1 - 2			Band 3 - 4			Band 5 - 6			Above Range		
	Low	Medium	High	Low	Medium	High	Low	Medium	High	Low	Medium	High	Low	Medium	High
% of Students	0	0	0	0	3.57	0	0	14.29	28.57	7.14	10.71	7.14	0	3.57	7.14
No of Students	0	0	0	0	1	0	0	4	8	2	3	2	0	1	2

Online tutorial assistance for reports can be accessed at <http://usingassessmentdata.vcaa.vic.edu.au/naplan/index.aspx>