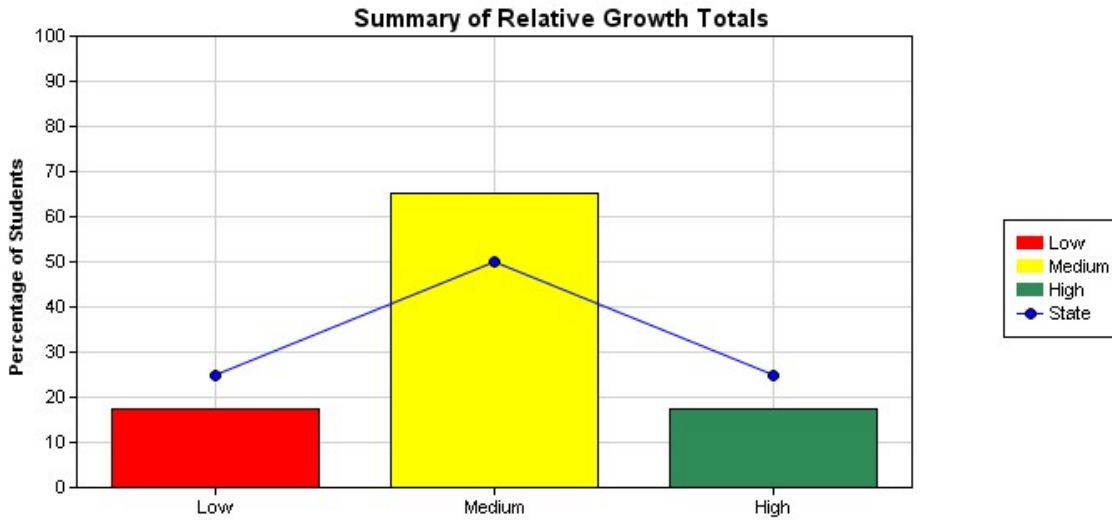
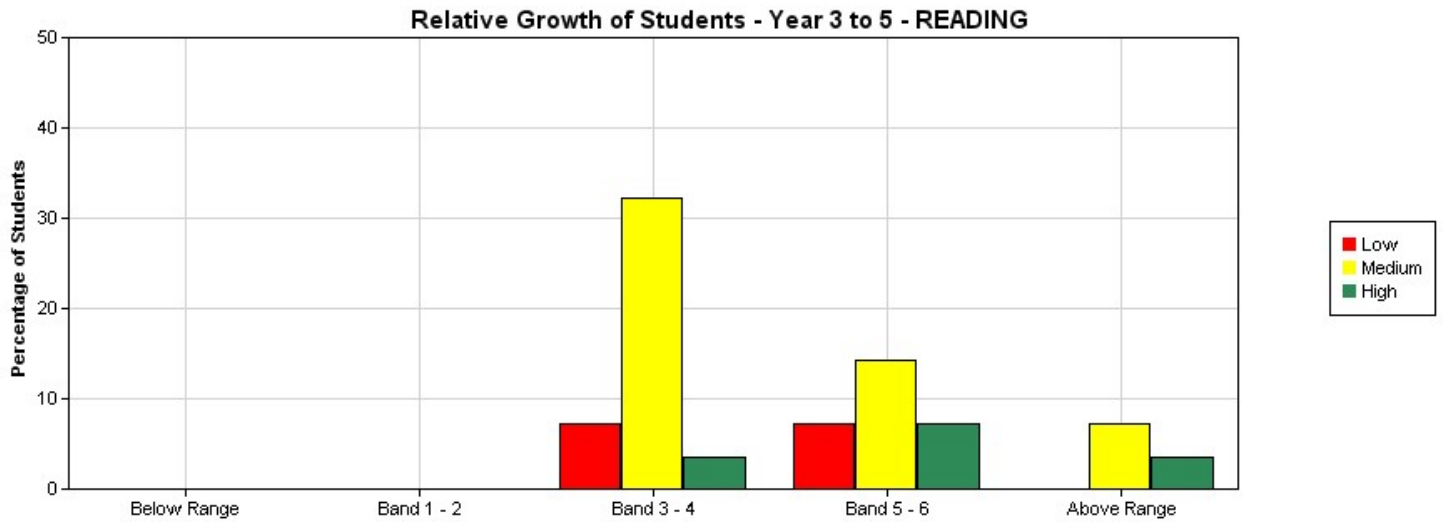


HARRISFIELD PRIMARY SCHOOL
Relative Growth Report - Graphical Summary for READING
National Assessment Program - Literacy and Numeracy Tests 2015
Year 5 - Class: All

[View - Information about this report](#)



	Low	Medium	High	Totals
Percentage of students - State	25	50	25	100
Percentage of students - School	17.39	65.22	17.39	100
No of Students - School	4	15	4	23



	Below Range			Band 1 - 2			Band 3 - 4			Band 5 - 6			Above Range		
	Low	Medium	High	Low	Medium	High	Low	Medium	High	Low	Medium	High	Low	Medium	High
% of Students	0	0	0	0	0	0	7.14	32.14	3.57	7.14	14.29	7.14	0	7.14	3.57
No of Students	0	0	0	0	0	0	2	9	1	2	4	2	0	2	1

Online tutorial assistance for reports can be accessed at <http://usingassessmentdata.vcaa.vic.edu.au/naplan/index.aspx>