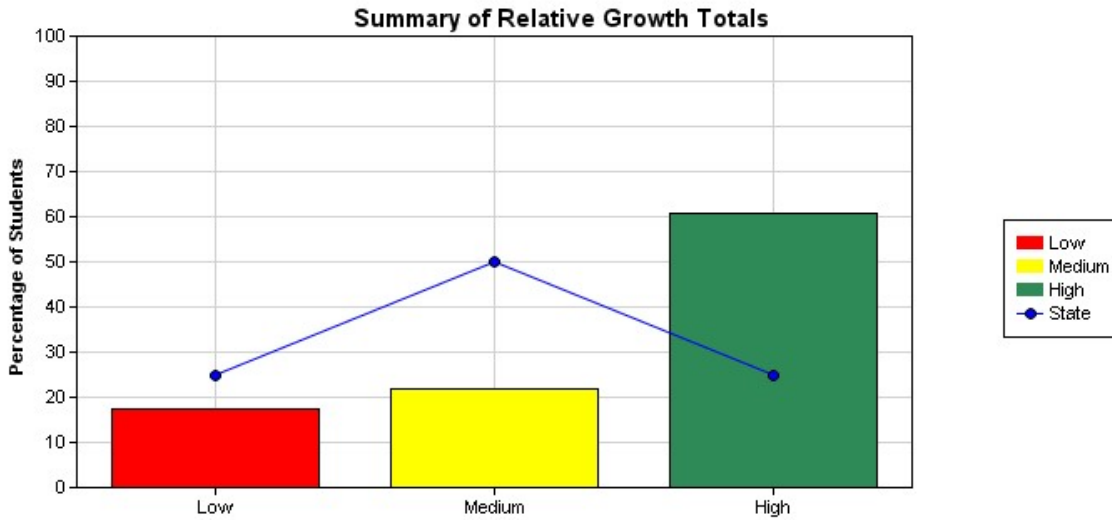
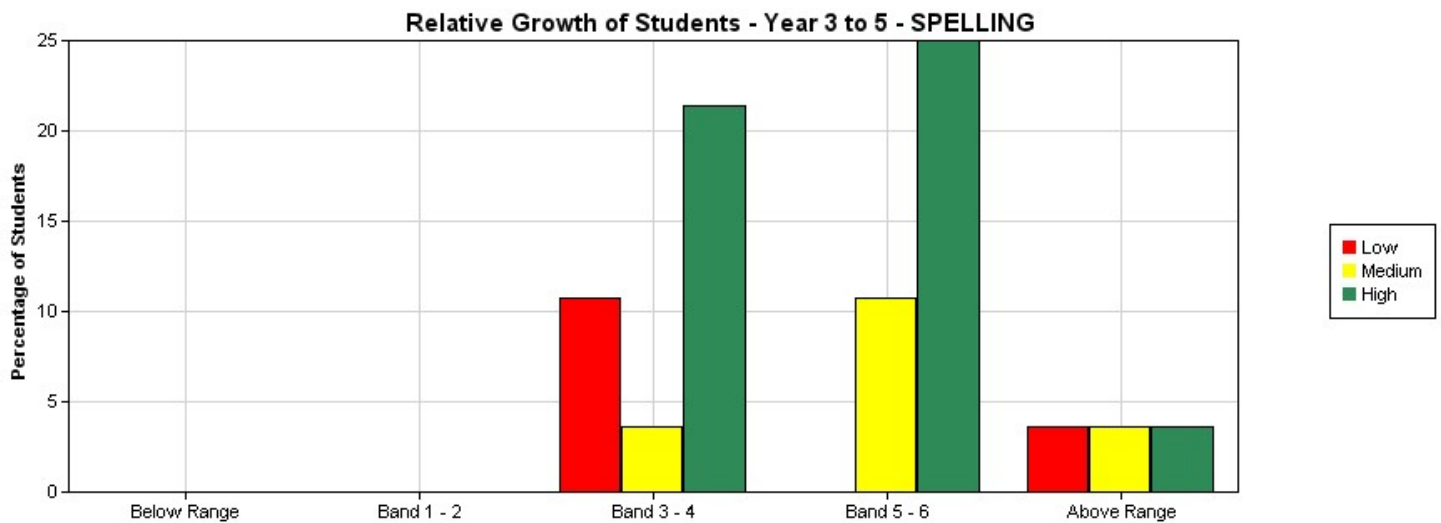


HARRISFIELD PRIMARY SCHOOL
Relative Growth Report - Graphical Summary for SPELLING
National Assessment Program - Literacy and Numeracy Tests 2015
Year 5 - Class: All

[View - Information about this report](#)



	Low	Medium	High	Totals
Percentage of students - State	25	50	25	100
Percentage of students - School	17.39	21.74	60.87	100
No of Students - School	4	5	14	23



	Below Range			Band 1 - 2			Band 3 - 4			Band 5 - 6			Above Range		
	Low	Medium	High	Low	Medium	High	Low	Medium	High	Low	Medium	High	Low	Medium	High
% of Students	0	0	0	0	0	0	10.71	3.57	21.43	0	10.71	25	3.57	3.57	3.57
No of Students	0	0	0	0	0	0	3	1	6	0	3	7	1	1	1

Online tutorial assistance for reports can be accessed at <http://usingassessmentdata.vcaa.vic.edu.au/naplan/index.aspx>